

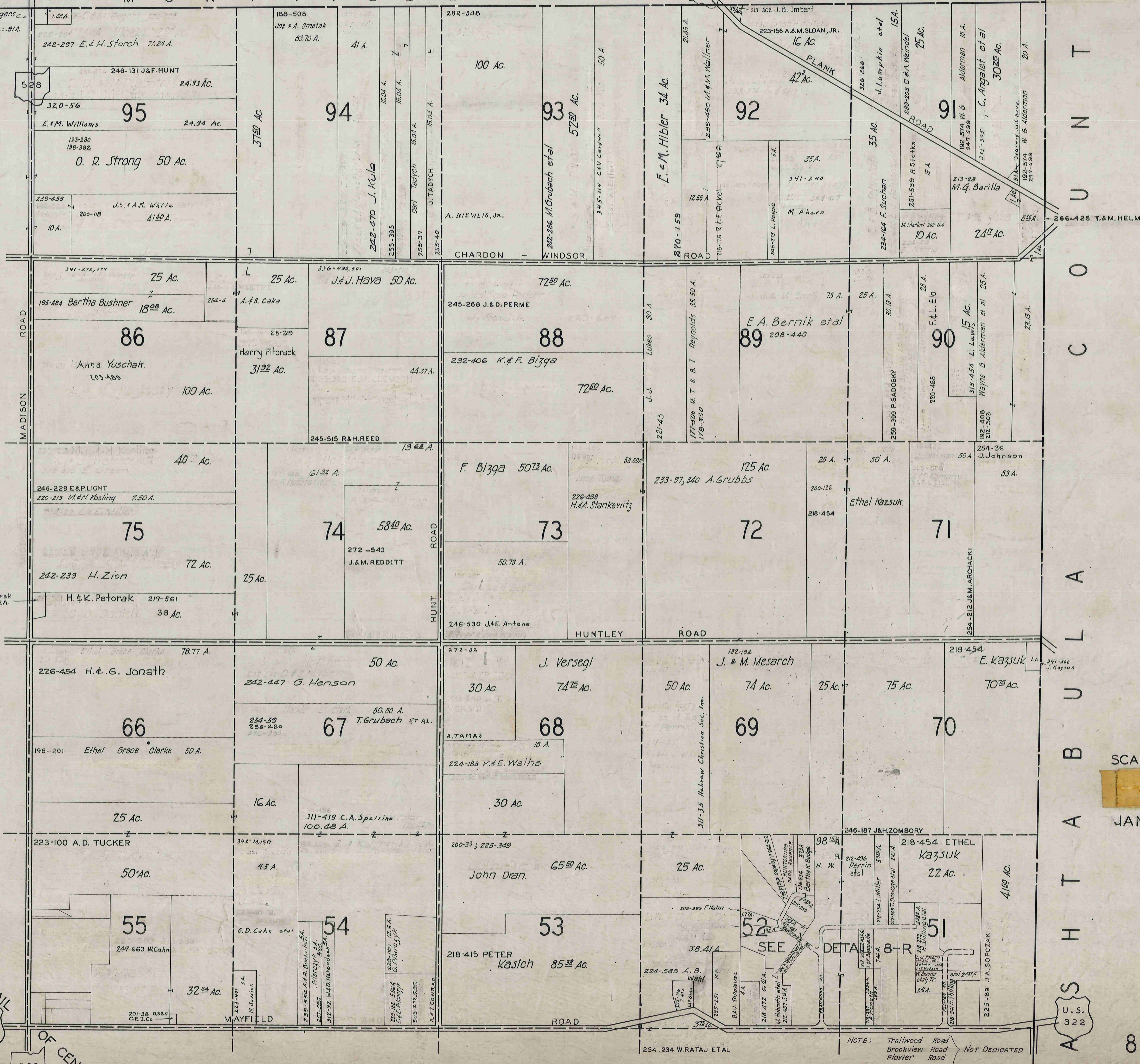
NORTH-EAST QUARTER

HUNTSBURG TWP.

NORTH-EAST QUARTER

M O N T V I L L E T O W N S H I P

246-274
239-66 J.L. Rogers
4000 sq. ft. shed
40000 " " " " Comp. - 91A.



SEE DETAIL
U.S. 322
OF CENTER
528

SCALE 1 in. = 10 CH.

JAN. 1, 1958

8 N.E.

NOTE: Trailwood Road, Brookview Road, Flower Road NOT DEDICATED

U.S. 322

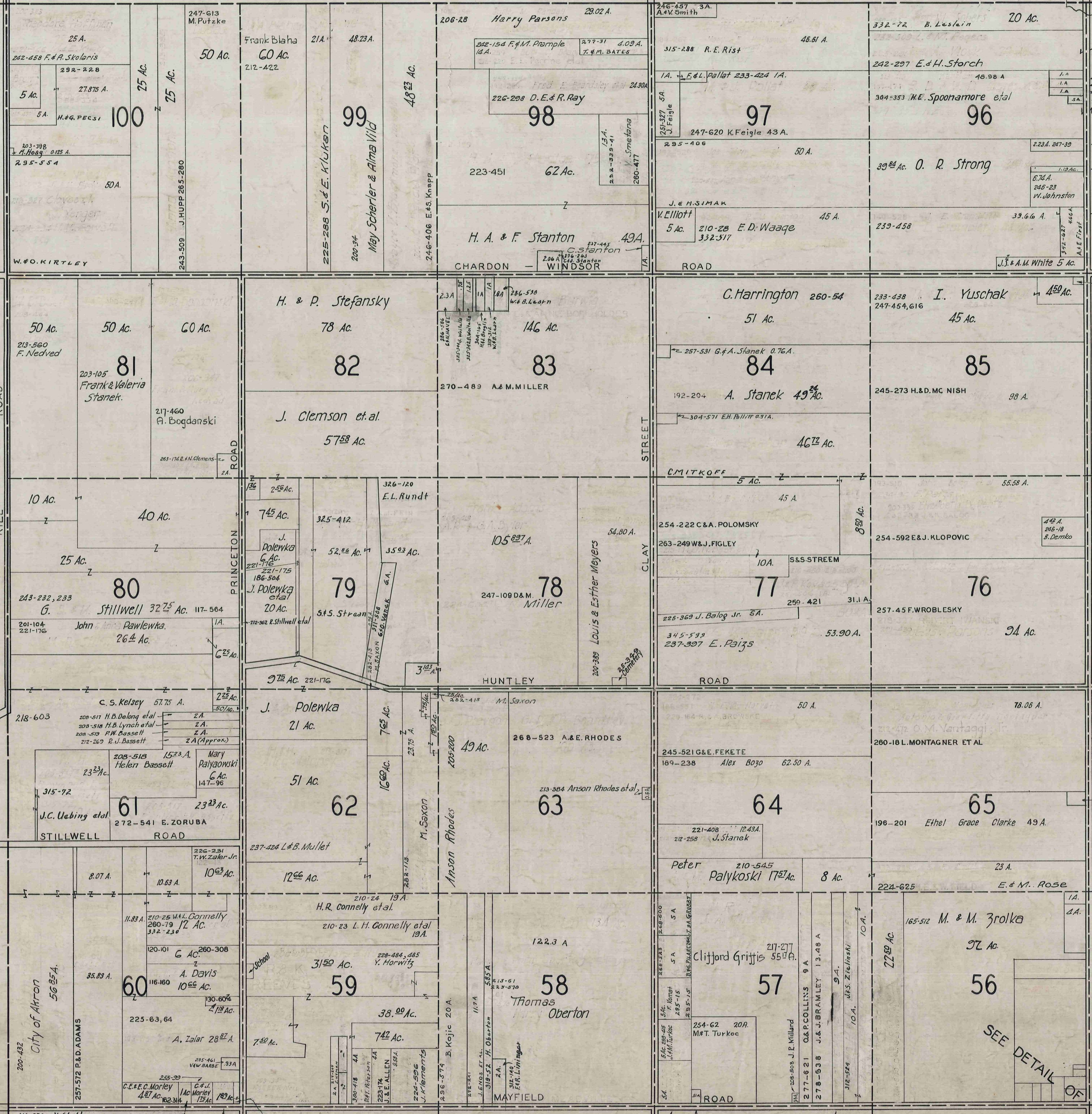
HAMB DEN TP.

MONTVILLE T.P.

528

300-622 F.P. KROCHOT

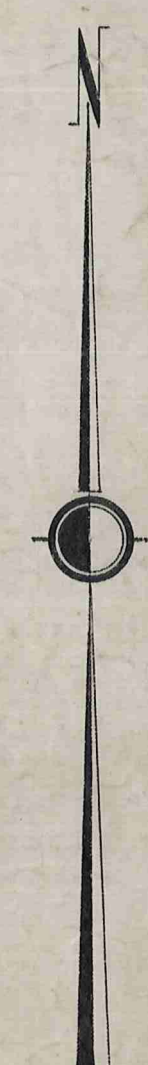
CLARIDON TOWNSHIP



304-425 G.E. Markey
 304-385 C.A. BOLLING
 313-335 S.A. Bolling
 335-593 A.H. Black
 C. Kreves
 220-445 W. Strong

220-351 V.G. Ceroky

MADISON ROAD



SCALE 1IN. = 10CH.

JAN. 1, 1958

U.S. 322

U.S. 322
 CENTER

8 N.W.

528

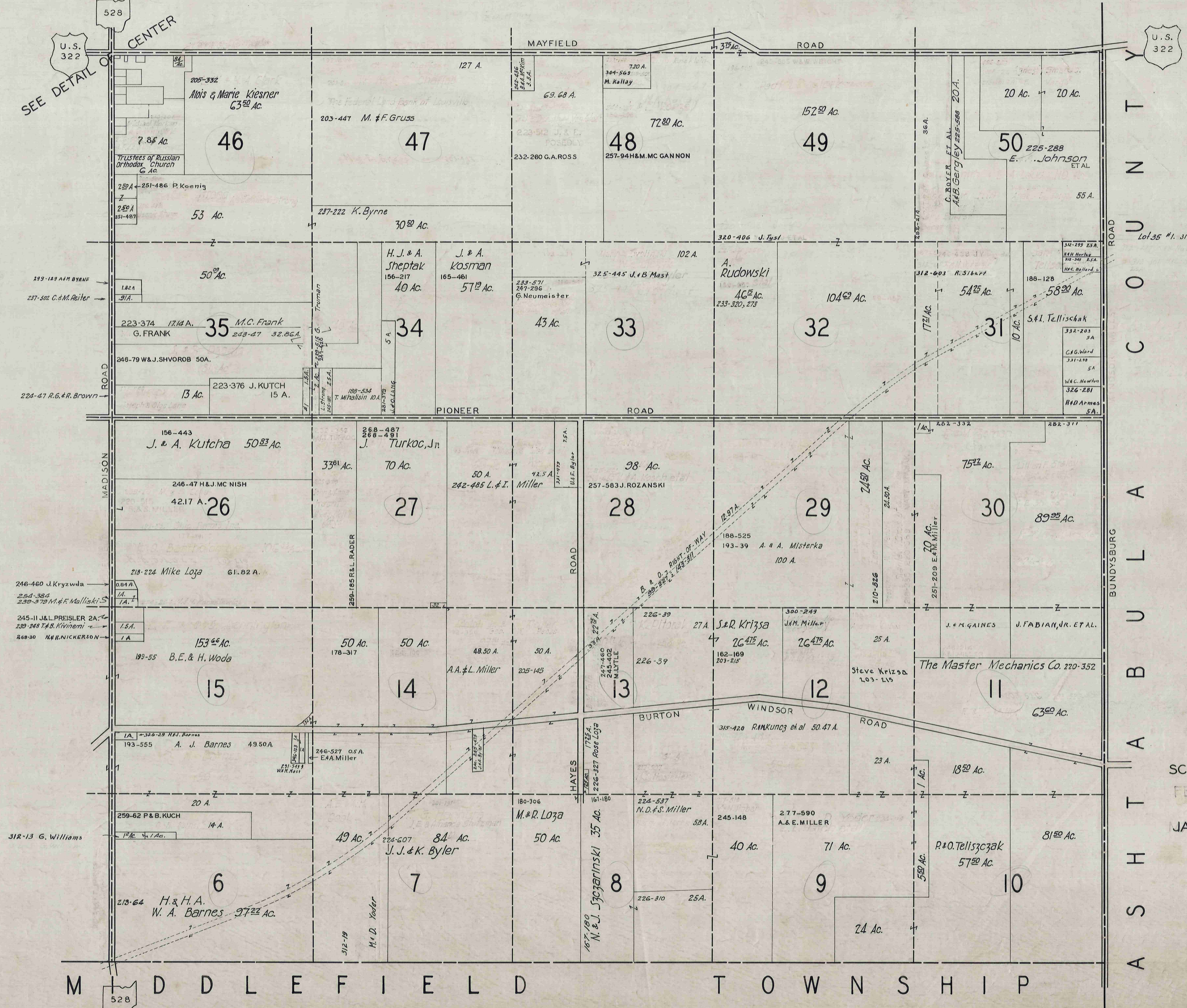
28-384 E.I. MOSS
 229-353 J. & M. Loge
 #1 312-263 M. Fendrick I.A.
 #2 232-196 A.A. Kluenger I.A.

SEE DETAIL OF

SOUTH-EAST QUARTER

HUNTSBURG T.P.

SOUTH-EAST QUARTER



SCALE 1 IN. = 10 CH
 FEB. 6, 1939
 JAN. 1, 1958

8 S.E.

SOUTH-WEST QUARTER

HUNTSBURG TP.

SOUTH-WEST QUARTER

U.S. 322

U.S. 322

- O.L. #41 #1 255-131 A. & M. Kuckow 2 A.
- O.L. #42 #2 257-445 R. & B. Hummel 1 A.
- O.L. #41 #3 303-21 J. & M. Minadeo 15 A.
- " #4 303-19 S. Santangelo 15 A.
- " #5 307-240 A. KAMINSKY 15 A.
- " #6 328-58 A. Santangelo 15 A.
- " #7 336-112 L. V. Graco 15 A.
- " #8 345-106 J. & M. Hummel 10 A.

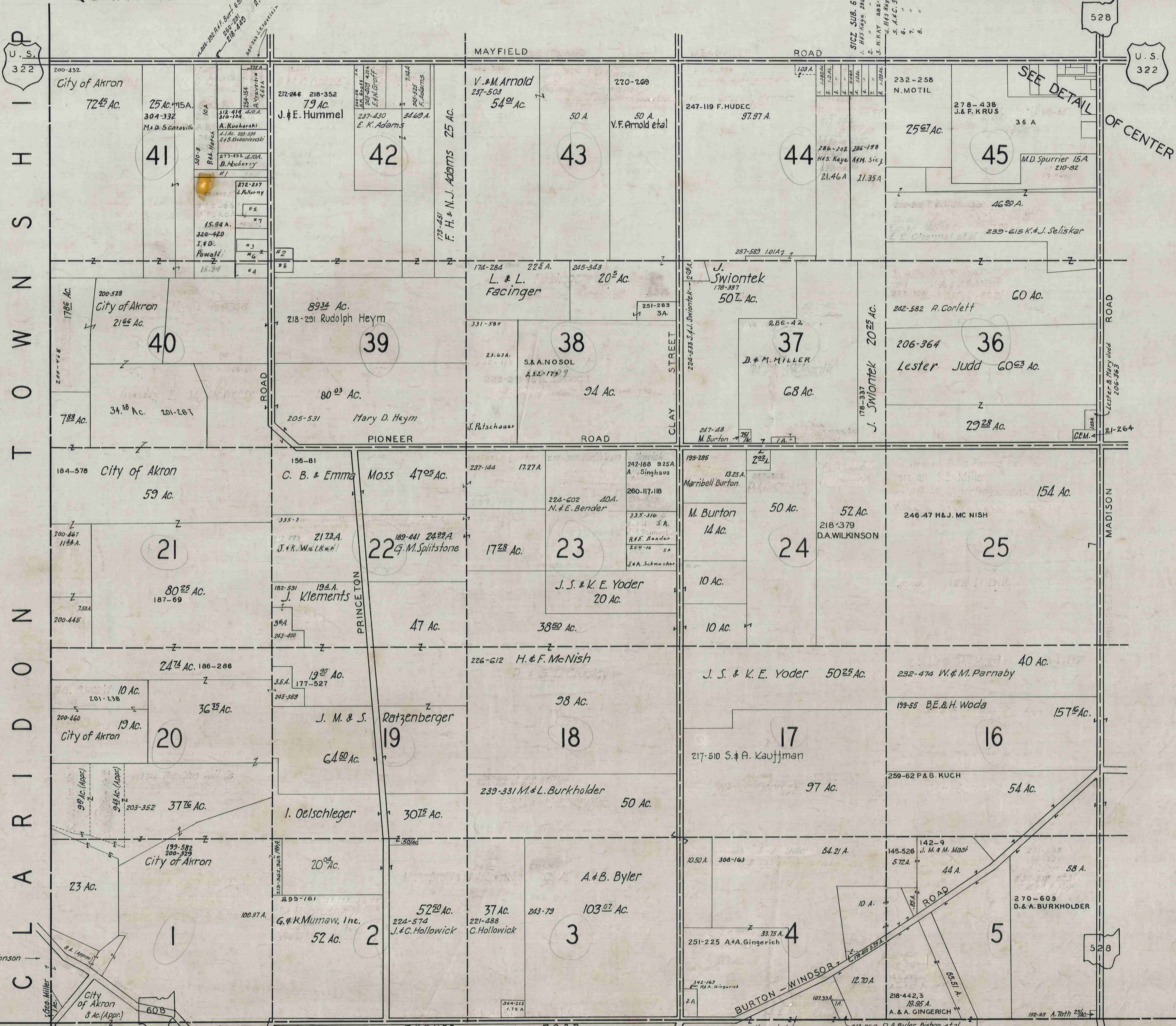
C L A R I D O N T O W N S H I P

BURTON TP.

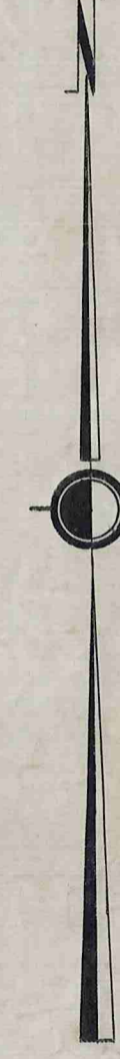
M I D D L E F I E L D T O W N S H I P

T O W N S H I P

8 S.W.



SCALE 1 in. = 10 ch.
 JAN. 1, 1958



SEE DETAIL OF CENTER

528

528